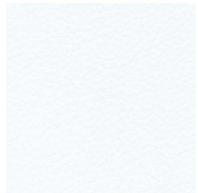


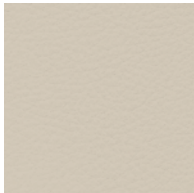
YONEI®

Materialien | Materials | Matières | Materiali | Материалы | 材质

Leder | Leather | Cuero | Pelle | Кожа | 真皮



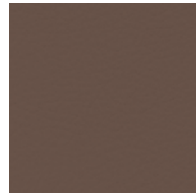
Leather white -13



Leather sand -10



Leather Taupe -07



Leather Nougat -06



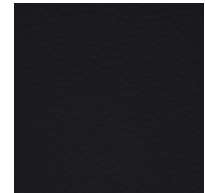
Leather bordeaux -08



Leather graphite -09



Leather choco -11



Leather black -12

Mikroleder | Microleather | microcuero | Fintapelle | микрокожа | 超纤皮



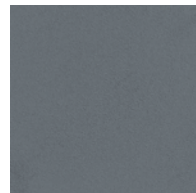
microleather beige -01



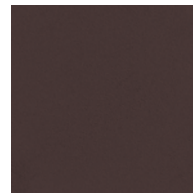
Microleather cashmere metallic -18



microleather light brown -02



microleather grey -05



microleather brown -04



microleather anthracite -03

Pantex

Pantex matt white -73



Pantex glossy white -63

Pantex matt taupe -77



Pantex glossy taupe -67

Pantex matt mocca -71



Pantex glossy mocca -61

Pantex matt black -72



Pantex glossy black -62

Pantex matt stone grey -74



Pantex matt graphite -79



Lack | Lacquer | Laque | vernice | лак | 鋼琴漆

matt white -43



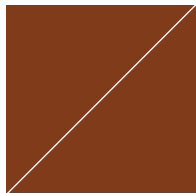
glossy snow white -33

matt sand -48



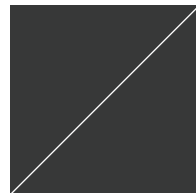
glossy sand -38

matt oxide red -44



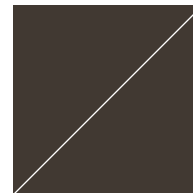
glossy oxide red -34

matt graphite -45



glossy graphite -35

matt mocca -41

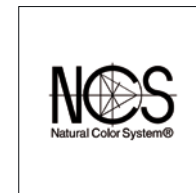


glossy mocca -31

matt black magic -42



glossy black magic -32



Holz | Wood | Bois | Legno | Древесина | 木材



Veneer oak nature -15



Veneer walnut -16

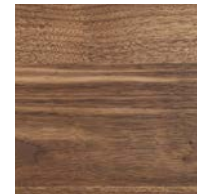


Veneer oak fine dark -14



Veneer macassar -17

S100 Holz | Wood | Bois | Legno | Древесина | 木材



Solid walnut -1



Solid maple -2

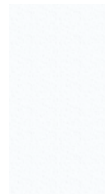
Metallfarben | steel colours | Couleurs métallisées | colori metallici | металлические краски | 金屬彩鋼



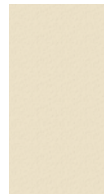
Stainless steel polished -1



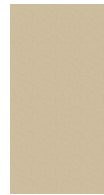
Stainless steel brushed -2



White -83



Sand -80



Taupe -87



Bronze (metallic) -86



Choco -81



Black -82



Stone grey -84



Graphite -89



Rusty iron -85

S100 Glasfarben | glas| verre | vetro | стекло | 玻璃



Glas clear -90



Glas bronze -96



Glas grey -95



Glas black -92

Made in Germany.

